

George F. Grant -

Son of Tudor E. Grant; Dentist; Inventor; Born in City of Oswego

©2017 OSWEGO COUNTY HISTORICAL SOCIETY 135 EAST THIRD STREET OSWEGO, NY 13126

BORN IN OSWEGO.

Death of Dr. George F. Grant, a Well Known Dentist of Chester.

The Dental Cosmos, one of the leading dental papers in the country, edited by Dr. Edward C. Kird, of the University of Pennsylvania, in the January issue pays high tribute to the late Dr. George Franklin Grant, of the Harvard Dental school, who died at Chester last August. Dr. Grant was one of the few negroes whose brilliancy of achievement in the medical line was recognized by all races, and so remarkable was his career that he was appointed to the faculty of Harvard University. He was born in this city in 1846, and when fifteen years of age he commenced the study of dentistry in the office of Dr. Albert Smith and continued there until 1867, when he removed to Boston, where he entered Harvard, being graduated cum summa laude in the class of 1870. He was the inventor of many dental devices and was the leading authority on the cleft palate treatment in the world.

Born in Oswego

Death of Dr. George F. Grant,
a Well Known Dentist of Chester

The Dental Cosmos, one of the leading dental papers in the country, edited by Dr. Edward C. Kird, of the University of Pennsylvania, in the January issue pays high tribute to the late Dr. George Franklin Grant of the Harvard Dental school, who died at Chester last August. Dr. Grant was one of the few negroes whose brilliancy of achievement in the medical line was recognized by all races, and so remarkable was his career that he was appointed to the faculty of Harvard University. He was born in this city in 1846 and when fifteen years of age he commenced the study of dentistry in the office of Dr. Albert Smith

and continued there until 1867, when he removed to Boston, where he entered Harvard being graduated cum summa laude in the class of 1870. He was the inventor of many dental devices and was the leading authority on the cleft palate treatment in the world.

The Oswego Palladium, January 12, 1911



A. S. SMITH, DENTIST.

The Oldest Established Office in Northern New York.

We are now prepared to do all classes of Dentistry at moderate prices. Superior work done in all branches of the profession. The best material used in every department. **For \$10**, we are making the finest set of teeth that is made in the State. Also a superior crown for \$5 and \$8. —Cor. E. 2d and Bridge Sts, over Oswego Co. Savings Bank

Upper Left: Article from The Oswego Palladium regarding Dr. Grant's obituary.

Left: Advertisement in the Daily Palladium, September 29, 1902, page 6.

Above: Photograph of Dr. George F. Grant, (public domain)

George F. Grant and the Improved Golf Tee

Vocabulary

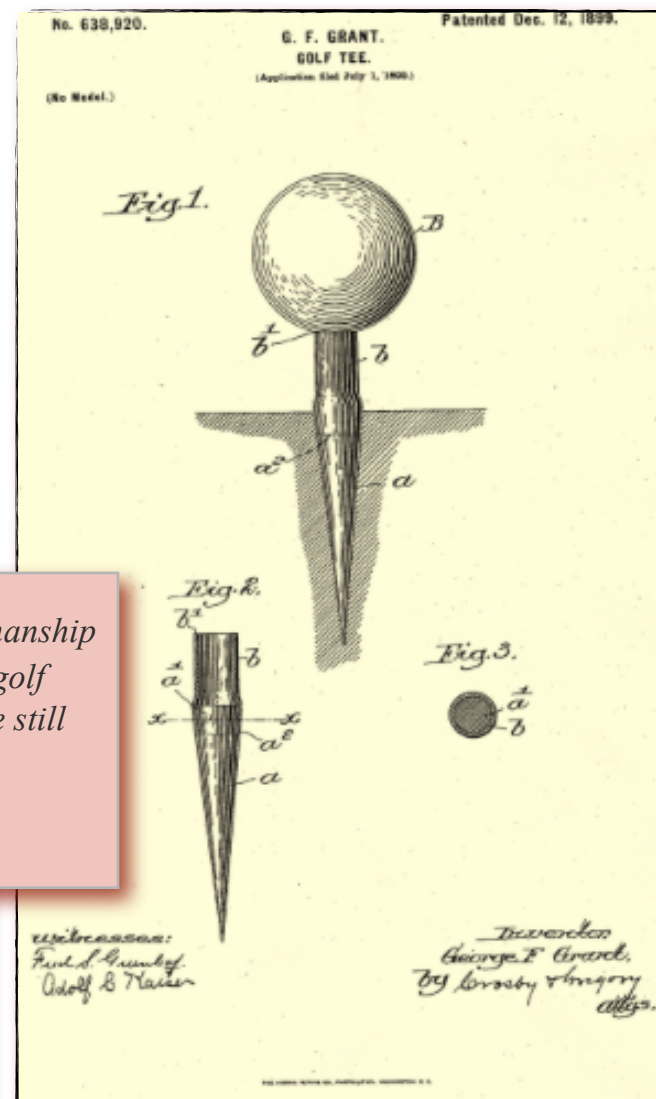
Patent:

When someone invents something, a patent is granted to claim the idea as the inventor's property. A patent, or legal claim of ownership of the idea, is good for 20 years and applies to only the United States it's territories and possessions.

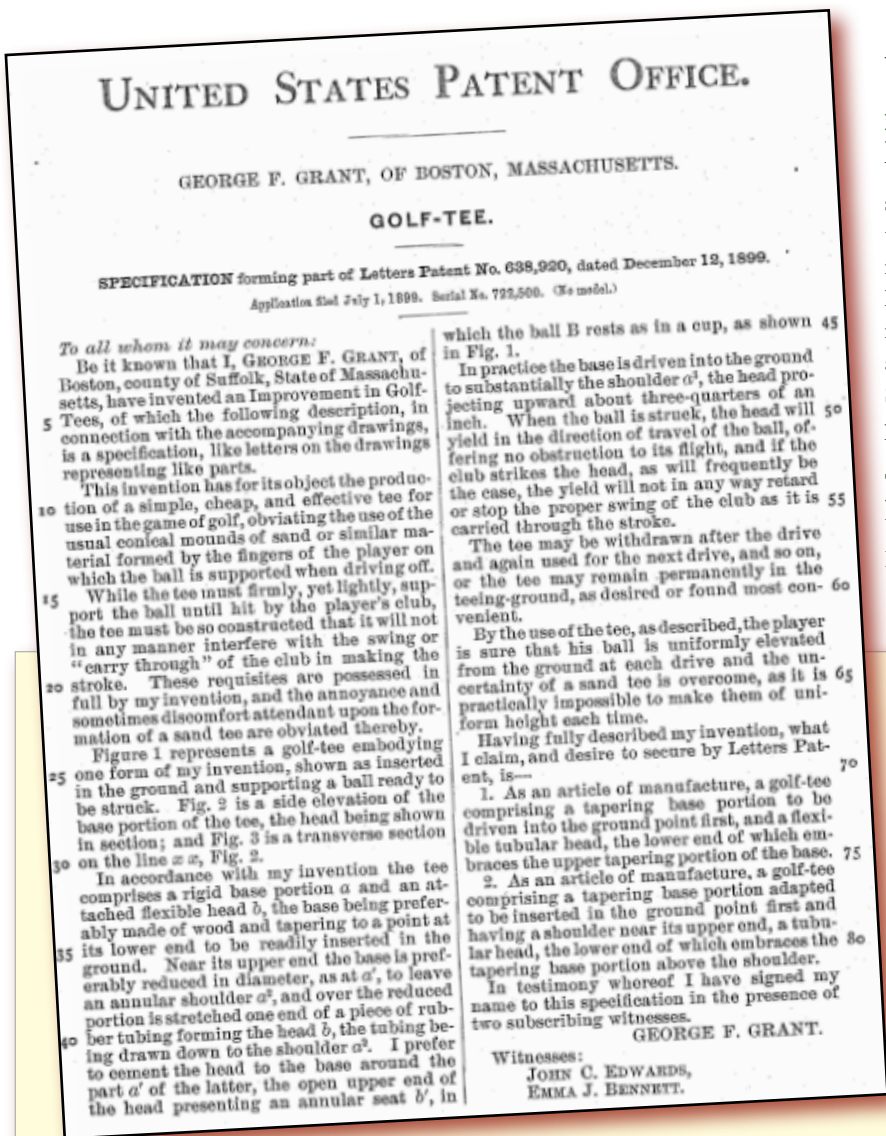
Three Types of Patents:

Utility Patents, Design Patents, Plant Patents

It's good sportsmanship to not pick up lost golf balls while they are still moving.
- Mark Twain



US Patent No. 638,920



George Grant golfed at the second golf course built in the United States: Franklin Park golf course.

George F. Grant

Questions from the reading:

1. When was George Grant born?
2. Who were his parents?
3. Who did he apprentice with when he was a teen?
4. What college did George Grant attend?
5. What was George Grant's occupation?
6. What was his specialty?
7. What did he invent?
8. Where did he play golf?
9. Where did he die?

Questions for further research and discussion:

1. Why did people become an apprentice?
2. What was special about Boston during the abolition that was attractive to black people during the 1800's?
3. How many people of color graduated from Harvard in the 1800's?
4. How many women graduated from Harvard in the 1800's?
5. What were some of the devices created for people with cleft palates in the 1800's?
6. What was the first golf course in Oswego County? Where was it located?

Special Project:

Locate a cross section of a tooth. Determine how a dentist might make the connection between a tooth and a golf tee. Just as George Grant made connections, select something that inspires you to improve another object. Create drawings of your "new" object to submit for your own "patent".